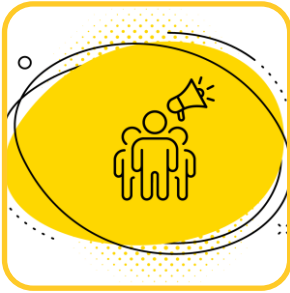


Support DD Services

Oregon is strongest when everyone has what they need to fully participate in community life.



Direct Support Professionals

Invest in the DSP workforce who provides vital daily living supports to people with I/DD. Correct the \$12.2M funding discrepancy caused by contractor data error and \$2.7M for an average wage of \$15/hr.



Case Management Entities

Case Management workload models are currently underfunded. A \$5 million investment will get us closer to the funding required to build needed capacity, increase health and safety monitoring, and invest time to build trust and prevent crisis.



Statewide Data System

A budget note is requested that directs DHS to study the establishment of a reliable statewide case management data system that will enhance ODDS data driven policy decisions, accurate forecasting, increased transparency, and allocation of resources.



Oregon DD
Coalition

“Having direct support professionals and a case manager I trust gives me the support I need to really live my life!”

Member Organizations: Albertina Kerr • ALSO • Bethesda • BENCO • Community Access Services • Community Pathways • CPAO • Community Vision • Creating Opportunities • Creative Supports • Danville Services of OR • Disability Rights Oregon • FACT Oregon • Full Access Brokerage • Inclusion Inc. • Independence NW • ISN • Living Opportunities • On the Move • Oregon Council on Developmental Disabilities • ORA • Oregon Self Advocacy Coalition • Oregon Support Services Association • Partnerships in Community Living • Resource Connections of Oregon • SDRI • SORB • Sunny Oaks • The Arc Lane • The Arc Oregon • UCEDD UO • UCEDD OHSU • UCP • WISE

Email: oregonddc@gmail.com | Website: www.orddcoalition.org

2020 Legislative Session Fact Sheet 2.9.20